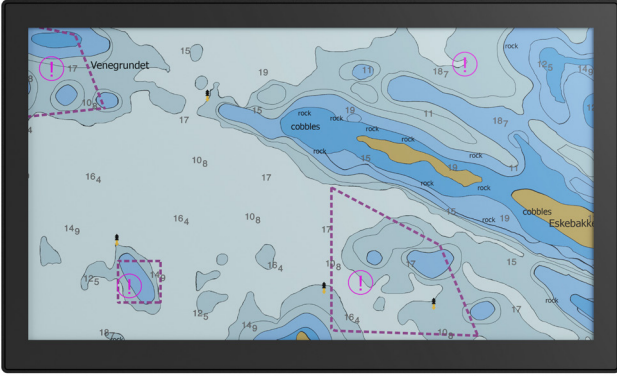


# DuraPANEL 15.6" S-Line

## Wide Screen Panel PC for Marine Applications



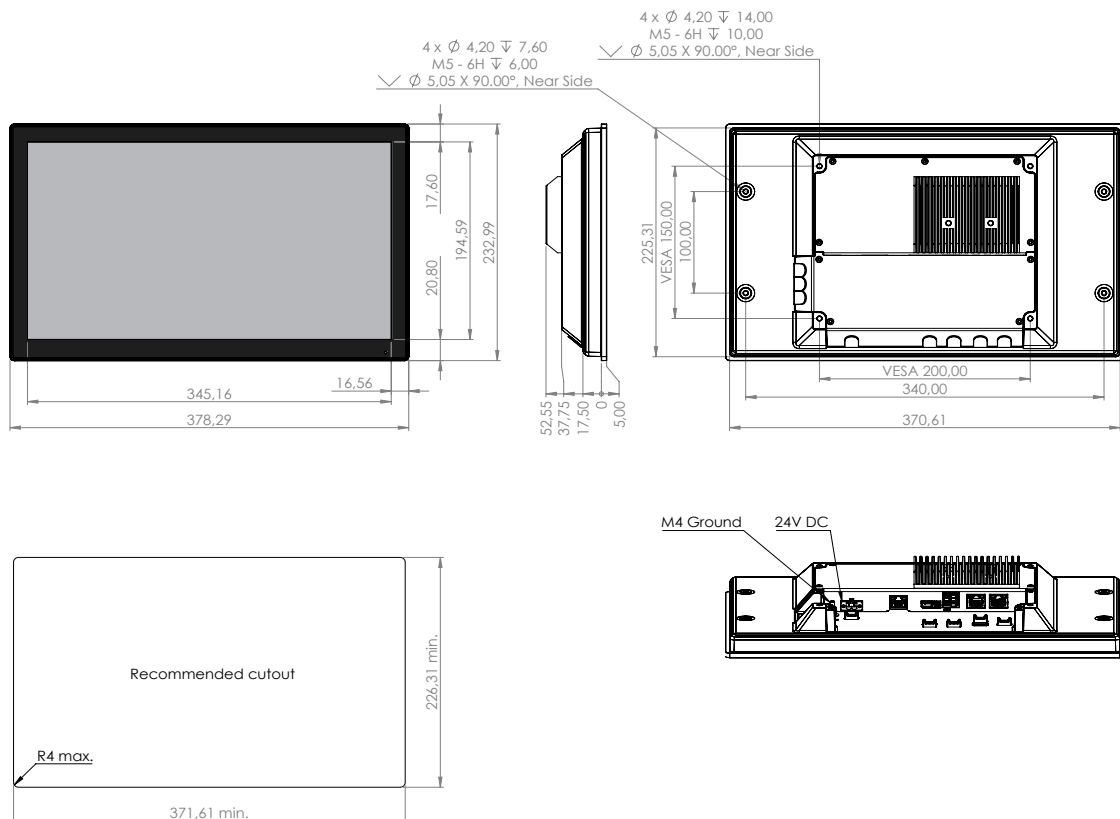
DuraPANEL 15.6" S-Line Panel PCは、ハードウェアに対して信頼性と耐久性が求められる、船舶・海軍等の用途用にデザインされました。

S-Line プロダクトファミリーは、超スリムなデザイン・ナローベゼル・軽量・低消費電力を特徴とする最新且つコストパフォーマンスの高い製品群です。

- ✓ 60945 Type Approval
- ✓ Bridge Applications
- ✓ Control Applications

## Mechanical outline

### DuraPANEL 15.6" S-Line



Table/ceiling bracket available - ISIC PN 09314-000

# Specifications DuraPANEL 15.6" S-Line

## Display properties

Size	15.6" wide screen
Aspect ratio	16:9
Active area	344.2 x 193.6 mm
Luminance	500 Cd/m <sup>2</sup>
Contrast	1000:1
Native resolution	1920 x 1080
View angle	89° (L/R/T/B) typical
Glass	Anti-reflective and chemically toughened
Touch	P-Cap multi touch

## Power supply/power consumption

DC Power	18 - 36 VDC galvanic isolated
Consumption	30 W Typ. 40 W Max.

## Input/output terminals

DP video out	1 x DP++
USB	2 x USB 3.0
Ethernet	2 x Gbit LAN, Intel I211

## Motherboard

Chipset	Intel® SoC solution
CPU	Atom X5-E3940 1.6GHz 4 cores 4 threads
Watchdog timer	255 steps
HW monitoring	Temperature, voltage
Wake-on-LAN	Yes
On board graphics	Intel® HD Graphics 500
Graphics supports	DirectX 12 Open GL 4.3 Open CL 2.0

## Physical dimensions

Dimensions	378 (W) x 233 (H) x 58 (D) mm
Dimensions in box	473 (W) x 338 (H) x 168 (D) mm
Weight	4.0 kg 4.3 kg in box

## Memory and Storage

Memory	Up to 8 GB DDR3L RAM, SODIMM
Storage	1 x M.2 B key 2242
Storage	Alternative via PCIe for NVME/SATA3.0

## Environmental

Operating temp.	- 15 to 55° C
Storage temp.	- 25 to 70° C
Humidity	8 to 95% relative humidity
Protection	IP56 from front - IP22 from rear
Compass SD	pending cm (stand.) pending cm (steer.)

## Operator control interface & OSD

Dimming	Windows API
Display properties	Controlled by OS

## Options & accessories

Remote control	ISIC tactile key pad - pending
Table/ceiling	Table/ceiling mounit bracket (09314-000)
Table stand	VESA adaptor plate for stand (09335-000)

## OS options

Windows 10	Windows 10 IoT
Linux	Ubuntu

## Approvals & Certificates

CE	EN 61000-6-2 & EN 61000-6-4
Marine	IEC 60945 ed. 4 & IACS E10 rev. 8
Certificate	DNV Mutual Recognition - in progress

Basic Japan Co., Ltd. 2-42-26-S110 Amanuma, Suginami-ku  
Tokyo, Japan, 167-0032  
Phone: (+ 81 ) 3 5335 7651  
mail@basicjp.com | <https://www.basicjp.com/>

ISIC A/S | Edwin Rahrs Vej 54 | 8220 Brabrand | Denmark  
Phone: (+ 45) 70 20 70 77  
isic@isic-systems.com | [www.isic-systems.com](http://www.isic-systems.com)

**BASIC JAPAN**

**ISIC** TRUSTED HARDWARE SYSTEMS